

IRRIGATION LAYOUT PLAN
HERITAGE GOLF & COUNTRY CLUB
ST. JOHNS WOOD GOLF COURSE

SCALE 1:1000
10 0 10 20 30 40 50
LENGTHS ARE IN METRES.



LEGEND

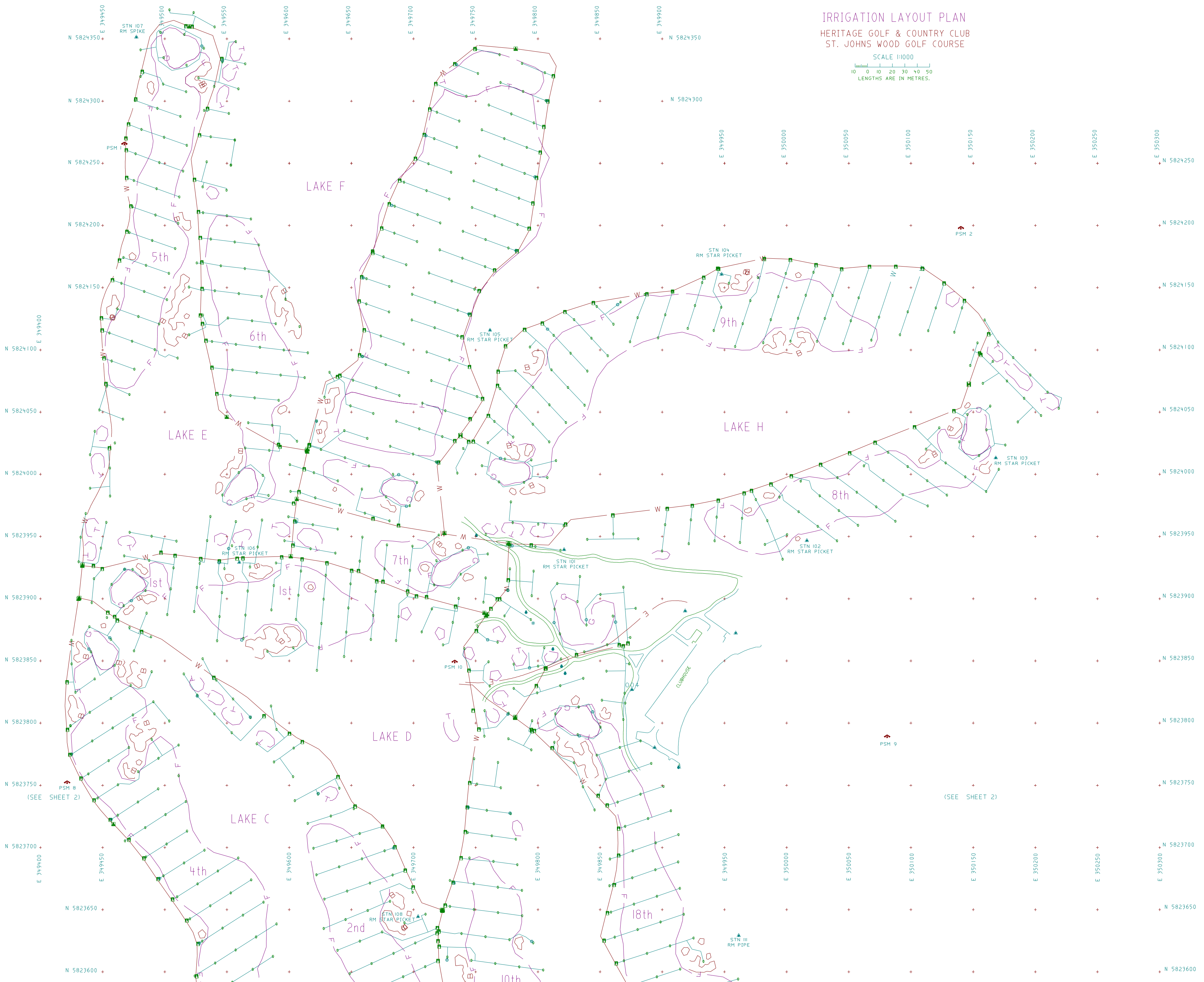
PSM pillar	Edge of green
Survey Mark	Edge of fairway
Irrigation box 0.35x0.3	Edge of bunker
Irrigation box 0.7x0.35	Underground electric cable
Irrigation box 0.65x0.4	Irrigation - main pipe
QC (by survey)	Irrigation - minor pipe
Sprinkler	Edge of conc.
ELECTRIC PIT	Edge of tee
Unclassified	Cart bridge
Sprinkler (approx)	Cart path
QC (approx)	Irrigation - main pipe (approx)
Fire hydrant	Irrigation - minor pipe (approx)

IMPORTANT NOTE:
This plan was prepared for Marfield Pty. Ltd. and is the irrigation layout plan for St. John's Wood Golf Course, Heritage Golf & Country Club. This plan has been derived partially by a built survey of the main irrigation pipes, preliminary set out points of sprinkler positions, & from the contractors irrigation sketch plans of the minor irrigation lines. As such limitations exist between the positional accuracy shown on this plan & its true constructed position on the golf course. Prior to any excavation or construction near the irrigation features shown on this plan, their exact location should be verified by field survey.

Please note that not all the QC's have been shown on this plan & this information will be provided at a later date.
Wayne B. Thomas (L.S.) can accept no liability for any loss or damage howsoever arising, to any person or corporation who may rely on this plan for any purpose.
The original of this plan remains the property of Wayne B. Thomas & copies of this plan must not be reproduced without this note which is an integral part of this plan.

REF : 99034
CAD FILE : HGC_IRRIG
SHEET 1 OF 2
DATE DRAWN: 4/9/2000 (T.G.)
ORIGINAL SHEET SIZE - A0

WAYNE B. THOMAS
LICENSED LAND SURVEYOR
3407 WARBURTON HIGHWAY, WARBURTON, 3799.
PH: (03) 5966-2222 FAX: (03) 5966-9119
EMAIL : kgthomas@bigpond.com



(SEE SHEET 2)

(SEE SHEET 2)